

Front-end pneumatic 6-jaw sequence chuck

BB-FZA2G

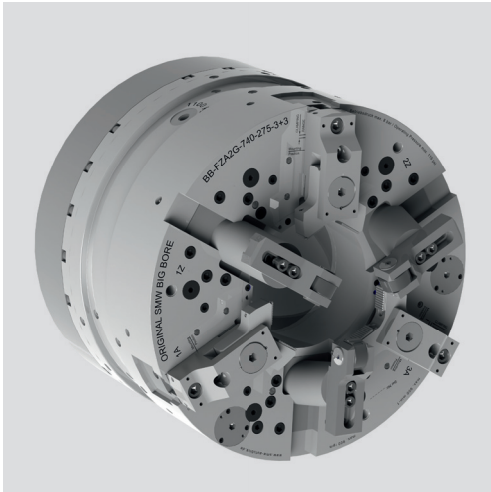
NEW



BIG BORE® BB-FZA2G

Front-end pneumatic 6-jaw sequence chuck

- EXTRA LARGE THROUGH HOLE Ø 275 - 390 mm
- 3 integrated centering jaws and 3 compensating jaws



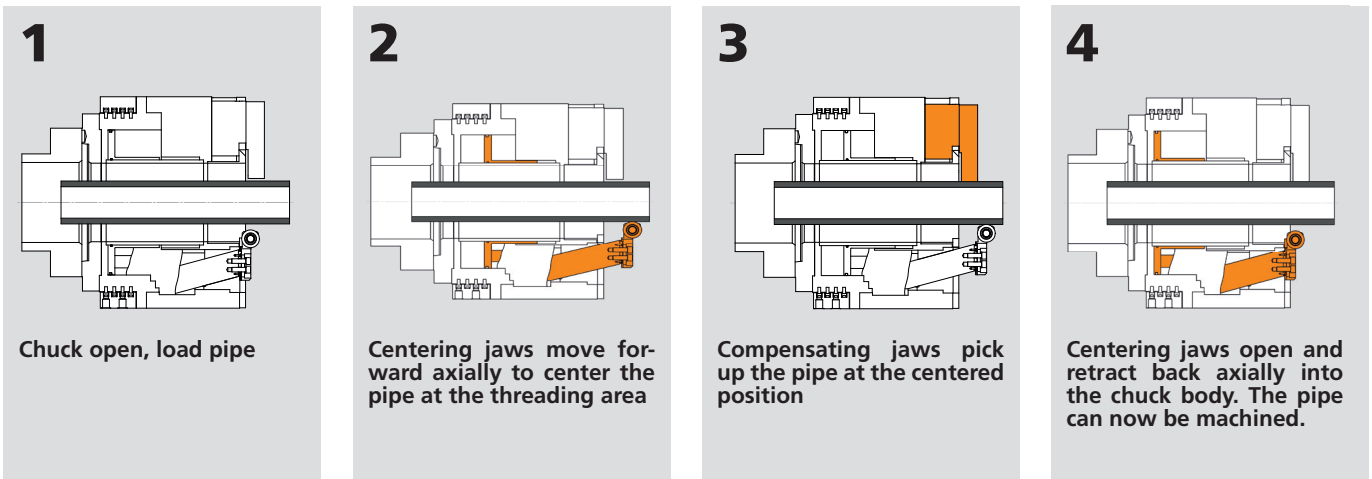
Application/customer benefits

- Extra long axial and radial stroke for centering jaws
- Adjustability of the axial centering position for pipe threading
- Extra long rapid and clamping stroke (1 1/2" total) for compensating jaws
- Stroke control for centering jaws
- Stroke control for each compensating jaw
- Pressure control

Technical features

- 3+3 jaw air chuck with 3 integrated centering jaws and 3 compensating jaws
- Integrated centering jaws move axially forward to center the tube exactly at the area to be threaded
- For external clamping only
- Fully automatic sequence is programmable

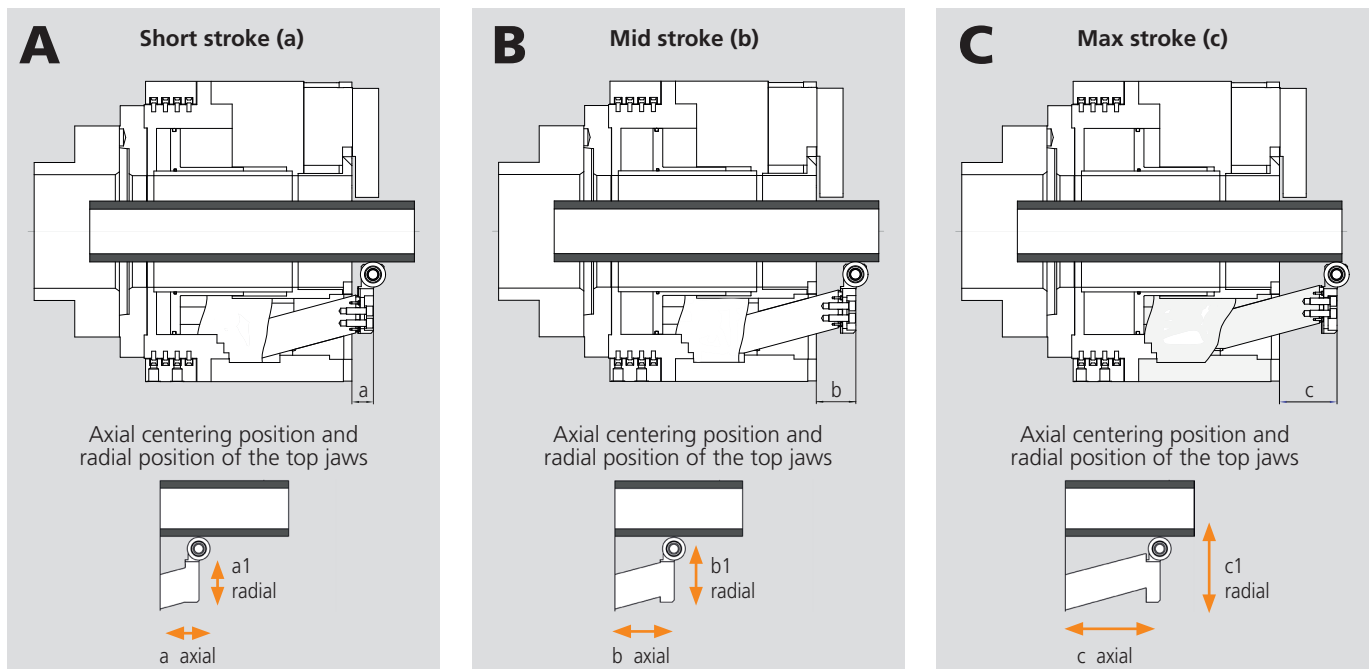
Machining of bent pipe with chuck with integrated centering jaws:



NEW

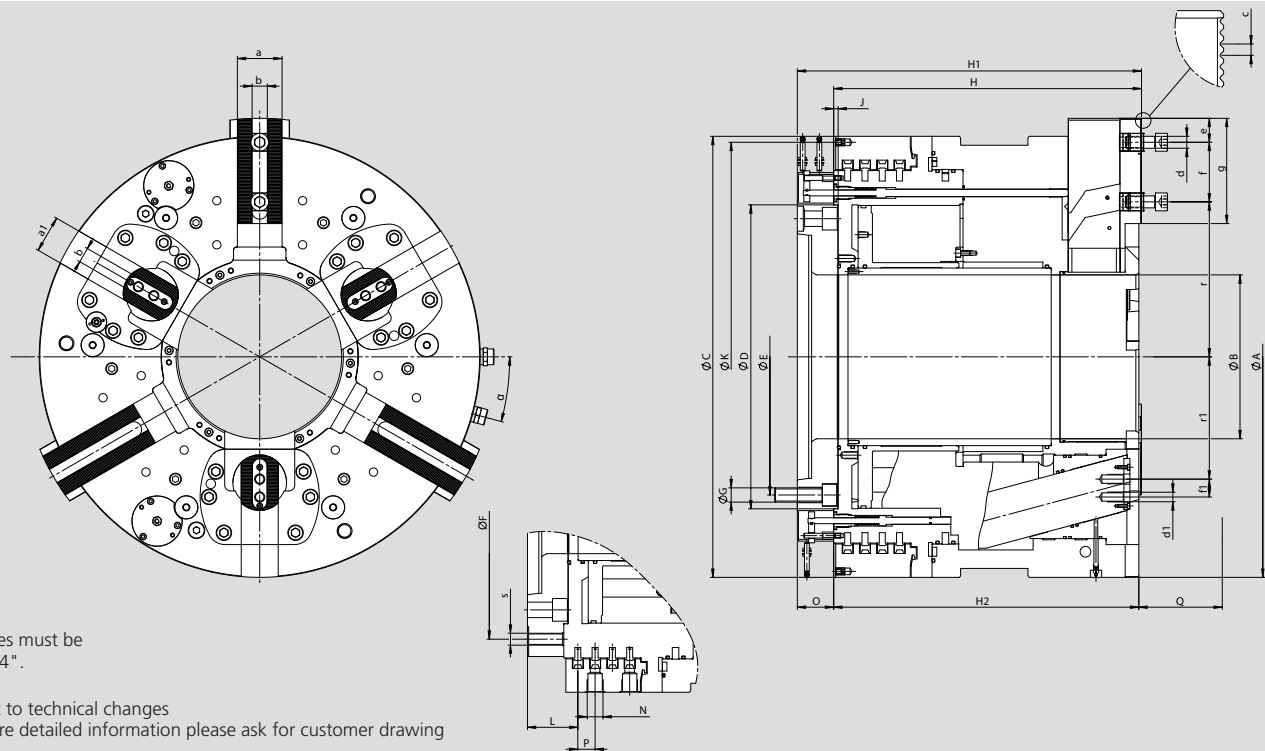
Adjustability of the axial centering position:

By changing the radial position of the top jaws, the axial centering position can be changed. The axial centering position is dependent from the radial adjustment of the top jaws.



BIG BORE® BB-FZA2G

Main dimensions and technical data



All hoses must be
min. 3/4".

Subject to technical changes
For more detailed information please ask for customer drawing

SMW-AUTOBLOK Type			BB-FZA2G-740-275-A20	BB-FZA2G-800-330-A20	BB-FZA2G-920-390-A20
Id. No.			054159	054300	054228
Chuck diameter	A	mm	740	800	920
Through hole	B	mm	275	330	390
	C	mm	740	800	920
	D	mm	510	510	550
	E	mm	463.6	463.6	463.6
	F	mm	562	615	724
	G	mm	M24	M24	M24
Chuck height	H	mm	516.5	516.5	546.5
	H1	mm	577.5	577.5	607.5
	H2	mm	512	512	542
	J	mm	7.5	7.5	7,5
	K	mm	720/6xM8	780/6xM8	890/6xM8
	L	mm	84.5	84.5	86.5
Connection for air hoses	N	inch	G 3/4"	G 3/4"	G 3/4"
	O	mm	61	61	61
	P	mm	3x29	3x29	3x31
Centering jaws axial stroke	Q	mm	140	140	160
	a	mm	75	75	75
	a1	mm	62	62	62
	b	mm	25.5 H7	25.5 H7	25.5 H7
	c	inch	3/32" x 90°	3/32" x 90°	3/32" x 90°
Jaw mounting bolts	d	mm	M20	M20	M20
Jaw mounting bolts	d1	mm	M16	M16	M16
	e	min.	30	30	30
	f	max.	100	100	135
	f1	mm	30	30	30
	g	mm	176.6	176.6	190
	r	min.	260	287.5	321
	r1	min.	205.2	232.7	275.3
	s	mm	M20	M20	M24
	α°	deg.	15	15	15
Speed max.		r.p.m.	900	750	600
Gripping force compensating jaws at 6 bar		kN (lbf)	90 (20200)	90 (20200)	150 (33300)
Gripping force centering jaws at 6 bar		kN (lbf)	100 (22500)	140 (31100)	140 (31100)
Jaw stroke compensating jaws total		mm (inch)	38.1 (1 1/2")	38.1 (1 1/2")	38.1 (1 1/2")
	rapid stroke	mm (inch)	29.6 (1.16")	29.6 (1.16")	29.6 (1.16")
	clamping stroke	mm (inch)	8.5 (0.34")	8.5 (0.34")	8.5 (0.34")
Jaw stroke centering jaws		mm (inch)	37.5 (1.47")	37.5 (1.47")	42.7 (1.68")
Air consumption jaw stroke at 6 bar					
Centering		liter	92	105	135
Compensating		liter	28	28	50
Weight (without top jaws)		kg (lbs)	1080 (2400)	1350 (3000)	1850 (4.100)
Operating pressure min./max.		bar (psi)	2/8 (29/116)	2/8 (29/116)	2/8 (29/116)
Moment of inertia		kg·m²	88	121	230